

Oliver Finlay

# Conservative Management of Achilles Tendonopathy



# Sequence of (Pathological) Events

1. Overload
2. Overload detected by cells
3. Cells increase their activation & proliferate
4. With continued load, the aggrecan migrates up the tendon, which results in thickening
5. Matrix breaks down sufficiently, providing opportunity for vascular penetration

# The Load Factor



- Without load, tendons lose function, with degradation occurring in the matrix & cells
- Overload leads to tendinopathy
- Therefore the aspects of load are critical

# Practical Implications

- If the tendon is healthy & the load is appropriate, the tendon will be strengthened
- If there has been significant unloading, followed by an episode of heavy loading, then the response will be significant (no stimulus for protein production/structure)

# In practice this means that:

- A) load needs to be increased gradually & heavy tendon loading days every 3 days initially
- B) if you detect a tendon response early, you can normalise it by applying the appropriate loads
- C) if you allow the tendon to enter a state of degenerative tendinopathy, you cannot restore the tendon to a normal state as reversibility is impeded by vascularisation enabled by the matrix disruption.

# Quantifying the Load

- Tensile Load - maintains fibrous tissue
- Compressive Load - forms & maintains cartilage
- Friction or Shear Load
- Combination Loads - maintains bone

# Load Influence on Tendons

- Mid tendon - affected by tensile load, but it is only the Achilles that will fail in the mid substance
- Insertion - affected by compressive load, but actually usually just proximal to the bone tendon junction
- Peritendonopathy - affected by friction & shear load, usually impacting the posterior gliding membranes & anterior fat structures

# Practical Implications - Tensile

- Any activity requiring a tendon to store & release energy (stretch-shorten cycle) can be considered a high tensile load for a tendon
- Anything else (high weight, eccentric activity) is easy
- Long thin springs are vulnerable to overload in the middle – Achilles
- Short thick springs are vulnerable to overload at the insertions – Patella



# Practical Implications - Tensile



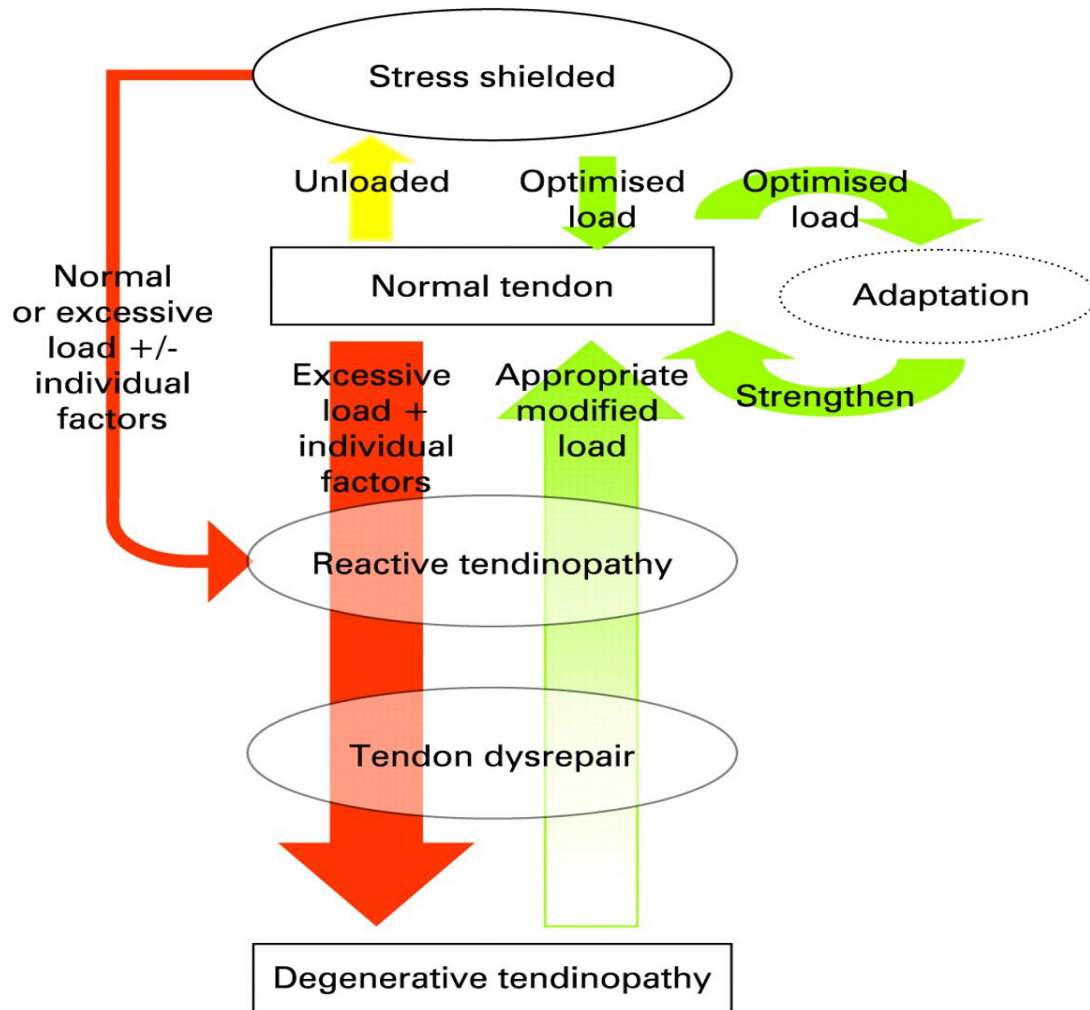
# Practical Implications - Compressive

- Compressive load will affect the fulcrum proximal to the insertion
- Tendons that act over a fulcrum - Glute Med/Min, Achilles (Haglund's), Supraspinatus, Adductor Longus, Hamstring (upper), Tib Post (at malleolus), Peroneii, Quads (femoral condyle in deep knee flexion)

# Practical Implications - Sheer

- The combination of compressive & tensile load will give shear load
- Stretching or loading at length may aggravate an insertional tendinopathy
- Therefore, change the stretch position & relieve the active tensile load
- Avoid eccentric Achilles loading programmes (especially beyond neutral) & introduce a heel raise acutely

# A Proposed Continuum for Tendon Pathology



Cook & Purdam, 2009

# Modifying the Load

- Know what load is detrimental  
Volume/frequency/intensity/type
- Manage the load  
Reduce energy storage/release, allow at least 2 days between loads, reduce load at length, reduce compression at insertion

# Modifying the Load



# Why?

- Avoid exacerbation of the tendon cell activity
- Reduce sensitisation of the tenocytes to reduce protein production
- Allow remodelling of the matrix (collagen)

# Clinical Presentations

Reactive tendinopathy "I did something crazy yesterday"

Degenerative tendinopathy "I've had a tendon that has grumbled for about 20 years but I can manage it ok & it doesn't give me too many issues"



# Time Scale & Treatment Aim

- True reactive:  
6 – 8 weeks  
Manage load (slow & heavy), RTS progression
- Reactive on degenerative:  
7 days  
Address contractile deficits, graduate tendon load

# Basic Treatment Framework

- Modify load
- Get strong
- Static slow tendon loads early
- Progress speed of loading
- Progress volume of functional activities
- Introduce elastic load

# Reactive Tendon Management

- Modify load & allow to settle for 7 - 10 days (tenocytes)
- Heel raise insertional & plantaris presentations (not boot)
- Resting position (avoid resting PF)
- Education

# Medical Management of Reactive Tendons

- Tenocyte inhibitors – ibuprofen, corticosteroids (short acting) - Dexamethasone is useful as an anti-proliferative, anti-cell activity & anti-protein accumulative agent
- Aggrecan inhibitors – ibuprofen, naproxen sodium, indomethacin (Dingle, 1999; Riley, 2001)
- TNF  $\alpha$  inhibitors – doxycycline (Fallon et al, 2008), green tea (Cao et al, 2007), fish oils (Mehra et al, 2006) – Triple therapy (Fallon et al, 2008)
- TGFB inhibitors – ACE inhibitors, curcumin

# Reactive Tendon Management

**DON'T OFF-LOAD  
COMPLETELY!!!**

**...unless it's a direct blow, using dex or a  
partial rupture**



# Partial Tendon Rupture

- Rest for a week
- Return to a loading environment
- Treat symptomatically



# Acute Peritendonopathy Management

- Remove stimulus
- Topical heparin can be very useful



# Stage 1 Rehabilitation

## Reactive Tendon Settling

- Aim: Switch down tendon sensitisation
- Time frame: 0 – 1 months
- Exercise frequency: 1 – 4 times daily
- Exercise intensity: isometrics (sustained loads in inner range), progressing to very slow isotonic, maximal tolerable weight



# Stage 1 Exercise

- 30-60 second isometrics, 4-6 reps
- 2-3 times a day
- Double leg seated calf raise
- Double leg leg press calf raise in knee extension
- Single leg seated calf raise
- Single leg leg press calf raise in knee extension

# Stage 2 Rehabilitation

## Strengthening

- Aim: Improve neuromuscular pathways, increase muscle strength, hypertrophy
- Time frame: 0 – 6 weeks
- Exercise frequency: 3-5 sessions per week
- Exercise intensity: Moderate to high weight, 60 second time under tension, high lactate (induce contractile modification), isotonic

# Stage 2 Exercise

- 10 reps, 6 second conc/ecc, 3-5 sets
- Partial recovery between sets (30 seconds)
- Increase load, decrease duration & reps, increase sets
- Double leg seated calf raise
- Double leg leg press calf raise in knee extension
- Single leg seated calf raise
- Single leg leg press calf raise in knee extension

# Stage 3 Rehabilitation

## Functional Strengthening

- Aim: apply sustained load to tendon in functional position & continue motor retraining
- Time frame: 2 – 4 months
- Exercise frequency: Every other day
- Exercise intensity: low – moderate resistance, progress to outer range, at slow speed, progress to eccentric motion

# Stage 3 Exercise

- 12 reps, slow conc/ecc, 3 – 5 sets
- Partial recovery between sets (30 seconds)
- Increase load, decrease duration & reps, increase sets
- Stair walks
- Heel lowers straight leg
- Heel lowers bent leg
- Split squat
- Sled walk pushes

# Stage 4 Rehabilitation

## Functional Speed

- Aim: introduce speed to movement
- Time frame: 2 – 4 months
- Exercise frequency: Every 2/3 days
- Exercise intensity: no/low resistance, controlled range (limit end range/compression), pain free, fast push off but no elastic demand

# Stage 4 Exercise

- 20 reps, 5 sets, fast push off but no elastic demand
- Step ups
- Double leg box jump ups
- Spotty dog holds
- Sled walk pushes

# Stage 5 Rehabilitation

## Athletic Function

- Aim: progress loading to functional levels of speed, sport specific strength, capacity to absorb repeat elastic load
- Time frame: 2 – 3 months (maintain stage 3 & 4)
- Exercise frequency: Schedule H, M, L Load Days
- Exercise intensity: functional strength, propulsion, increased loading speed, lower weight, conc/ecc turnaround, combinations, increase jump height, progress to accel/decel, change of direction



# Stage 5 Exercise

- Pool jumps
- Bounds
- Slow skips
- Alternate legs
- Scooters

# Stage 5 Exercise

## Progressions

- Block starts
- Uphill bounds
- Skips
- High skips
- Accelerations
- Decelerations



# Key Points

- Early intervention with thorough assessment
- Monitor with standardised, provocative tests
- Accept pain during, monitor latent pain (24hr)
- Planning (realistic, coach buy in)
- Individualise – avoid recipes
- Strategic – entry point, end point
- Education – self management
- Prehabilitation

# Avoid

- High load, poor recovery
- Painful eccentric programmes
- Isolated exercise types
- Ultrasound & frictions (tenocyte activation)
- Rest
- Splints
- Plyometrics

# Occlusion Training

- 3-4 sets to failure, with 30 second recovery between sets but no release of cuff pressure  
Achieves massive revascularisation in addition to exercise benefit
- 3-4 sets of 15 reps, with 60 second recovery between sets with cuff pressure released  
Suited to high intensity strength training, allowing for increased volume – gentler & so can do 2 sets in a day

Gualano (2010), Loenneke (2009), Takarada (2000)

# Complex

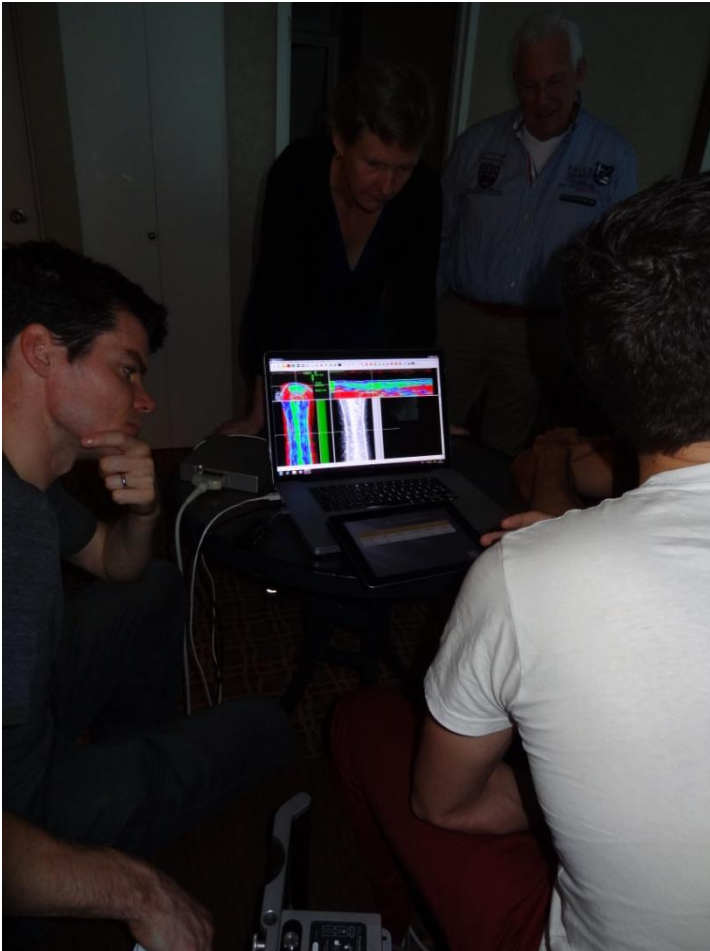


- Stage 1: endorphinic
- Stage 2: capillarisation, muscle atrophy
- Stage 3: strength
- Stage 4: potentiation
- Stage 5: plyometric

# Ultrasound Characterisation Technique

- Dr Hans van Schie (Netherlands)
- Standard grey scale ultrasound imaging
- Used with a tracker (600 axial images, every 0.2mm over 12 cm & reconstructs in the sagittal & coronal planes)
- Correlates pixel brightness & collates results
- Distinguishes between intact, discontinuous, mainly fibrillous, mainly cellular & fluid

# Ultrasound Characterisation Technique





# References - Pathology

- [Benjamin, M. \(2006\) Where tendons & ligaments meet bone - attachment sites \('entheses'\) in relation to exercise & or mechanical load. \*J Anat\*; 208: pp471-490](#)
- [Cook, J.L. & Purdam, C. \(2009\). Is tendon pathology a continuum. A pathology model to explain the clinical presentation of load-induced tendinopathy. \*BJSM\*; 43: pp409-416](#)
- [Fredberg, U. & Stengaard-Pedersen, K. \(2008\). Chronic tendinopathy tissue pathology, pain mechanisms, & etiology with a special focus on inflammation. \*Scand J Med Sci Sports\*; 18: pp3-15](#)
- [Kujala, U. et al \(2005\). Cumulative incidence of Achilles tendon rupture & tendinopathy in male former elite athletes. \*Clin J Sports Med\*; 15\(3\): pp133-135](#)
- [Malliaris, P. et al \(2006\). Prospective study of change in patellar tendon abnormality on imaging & pain over a volleyball season. \*BJSM\*; 40: pp272-274](#)
- [Rees, J. et al \(2009\). Management of tendinopathy. \*AJSM\*; 37\(9\): pp1855-1867](#)
- [Wang, J.H.C. \(2006\). Mechanobiology of tendon. \*J Biomech\*; 39: pp1563-1582](#)
- [Xu, Y. & Murrell, G. \(2008\). The basic science of tendinopathy. \*CORR\*; 466\(7\): pp1528-1538](#)

# References - Pharmacology

- Cao, H et al (2007). Green tea increases anti-inflammatory tristetraprolin & decreases pro-inflammatory tumor necrosis factor mRNA levels in rats. *J Inflammation*; 4(1): doi:10.1186/1476-9255-4-1
- Fallon, K. et al (2008). A polypill for acute tendon pain in athletes with tendinopathy? *J Sci Med in Sport*; 11: pp235-238
- Mehra, M.R. et al (2006). Fish oils produce anti-inflammatory effects & improve body weight in severe heart failure. *J Heart & Lung Transp*; 25(7): pp834-838
- Riley, G.P. et al (2002). Matrix metalloproteinase activities & their relationship with collagen remodelling in tendon pathology. *Matrix Biology*; 21(2): pp185-195

# References - Exercise

- [Allison, G.T. & Purdam, C. \(2009\) Eccentric loading for Achilles tendinopathy – Strengthening or stretching. BJSM; 43: pp276-279](#)
- [Gualano, B. et al \(2010\) Resistance Training with Vascular occlusion in inclusion body myositis a case study. Med Sci Sports Ex; 42\(2\): pp1-5](#)
- [Jonsson, P. et al \(2008\) New regimen for eccentric calf-muscle training in patients with chronic insertional Achilles tendinopathy: results of a pilot study. BJSM; 43: pp746-749](#)
- [Loenneke, J.P. & Pujol, T.J. \(2009\) The use of occlusion training to produce muscle hypertrophy. Strength & Cond J; 0\(0\) online](#)
- [Sata, S. \(2005\) Kaatsu training for patella tendinitis patient. Int J Kaatsu Training Res; 1: pp29-32](#)
- [Takarada, Y. et al \(2000\) Applications of vascular occlusion diminish disuse atrophy of knee extensor muscles. Med Sci Sports Exerc; 32\(12\): pp2035-2039](#)
- [Takarada, Y. et al \(2000\) Rapid increase in plasma growth hormone after low-intensity resistance exercise with vascular occlusion. J Appl Physiol; 88: pp61-65](#)
- [Wernbon, M. et al \(2008\) Ischemic strength training - a low load alternative to heavy resistance exercise. Scand J Med Sci Sports; 18: pp401-416](#)

# Thank You



[www.OliverFinlay.com](http://www.OliverFinlay.com)